

## Marine Sciences Center of Excellence

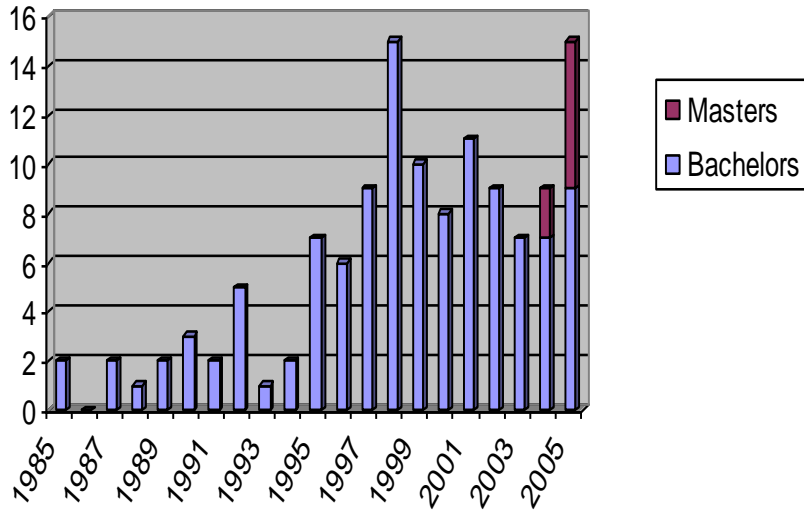
- **B.S. Degree** Approved 1979, Marine Biology (1985-1998), Marine Sciences (1999-present) ~70 students enrolled
- **M.S. Degree** approved 2001, ~15 students enrolled
- In dev. - **Aquarium Science Certificate Program (GAI)**
- **Faculty** - 5 SSU + 9 faculty (SKIO, USACE)
- **Programs/sponsors/partners** (NSF –Bridge, NSF/ONR - CIRE, DOE – BI-OMP, NOAA - LMRCSC, DOE Title III - Center development.

### Marine Science degrees awarded 118 B.S., 8 M.S.

- **B.S. degree grads.** Employed wide a wide variety positions.
- **Seventeen** have completed advanced degrees and are now, physician assistants, biologists, veterinarians, lawyers, film makers, and research professors. **Three** completed doctoral degrees.
- **Seven** now enrolled in advanced degree programs at SSU an elsewhere. **Three** are currently in doctoral degree programs.

# Marine Science Degrees Awarded

126 - 48% B, 47% W, 5% O







## Carla Curran

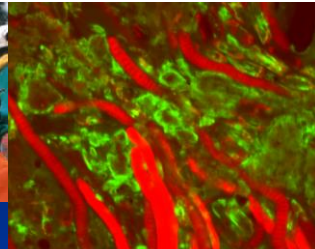


- Larval transport of flatfishes and the use of settlement areas by juveniles
- The prevalence of a bopyrid isopod parasite on grass shrimp
- Recovery of Meiofauna in Intertidal Feeding Pits Created by Rays
- The occurrence of *Spartina* dieback in coastal Georgia

## Dionne Hoskins



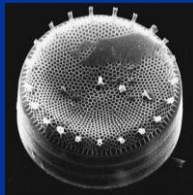
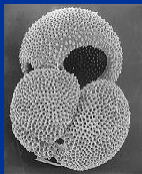
- Deposit-feeder ecology in muddy sediments
- Macrobenthic community structure
- Food availability for deposit feeding organisms
- Essential Fish Habitat (dieback areas)
- LMRCSC (NOAA LabsCC: Paul Pennington and others there. )



## Carol Pride



- Marine Records of Climatic and Oceanographic Change
- Marine Sediments
- Micropaleontology
- Stable Isotope Biogeochemistry



Marine Plankton as Recorders  
Of Environmental Change

## Joe Richardson



- Benthic ecology
- Marine algal ecology
- Water quality studies in coastal rivers and estuaries
- Working with citizens, schools and local governments on water quality issues.

# Matt Gilligan



- Biogeography and ecology of coastal migratory and tropical marine reef fishes
- Biology of live-bottom reefs of the inner- and midshelf of the South Atlantic Bight
- Marine sanctuaries and marine protected areas



## ■ Adjunct Graduate Faculty (SkIO)

- Dr. Clark Alexander
- Dr. Jackson Blanton
- Dr. Marc Frischer
- Dr. Richard Lee
- Dr. James Nelson
- Dr. James Sanders
- Dr. Peter Verity
  
- Dr. Jeff King, USACE

